

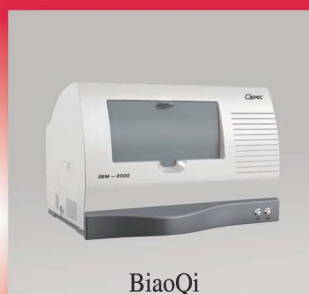
METS exhibition

Machinery, Equipment, Technology and Supplies for Jewellery & Watch Industry

香港珠寶鐘表工業科技及用品展

24-27 / 6 / 2015

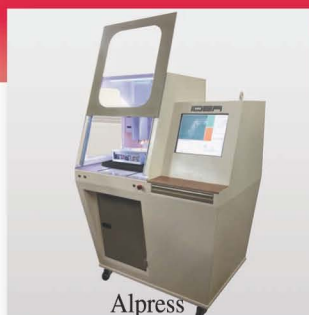
Kowloonbay International Trade & Exhibition Centre, Hong Kong



BiaoQi



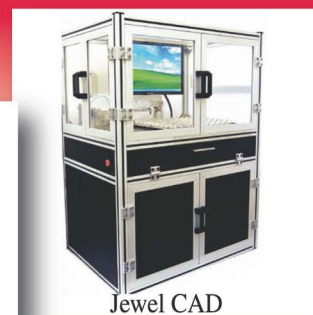
Kingsway



Alpress



Jeco



Jewel CAD

To provide a more comprehensive and efficient trading platform for global visitors and exhibitors, **METS 2015** will be held at Kowloonbay International Trade & Exhibition Centre, a key commercial area in Hong Kong. Exhibits cover the entire jewellery and watch production process encompassing a wide spectrum of advanced manufacturing equipment, tools, supplies, testing devices, security systems, etc. One of the show highlights will be a wide array of gemstones, pearls and other raw materials. Come visit the ideal mid-year sourcing fair!

Opals Mine



Lucky Gems



Rio Pearl



China Stone



Wing Fung



Ovadia Trays

(Part of METS 2014 exhibits)

Organizer:



香港珠寶玉石廠商會
Hong Kong Jewellery & Jade Manufacturers Association

For enquiry:

Flat A, 12/F., Kaiser Estate Phase 1, 41 Man Yue Street,
Hung Hom, Kowloon, Hong Kong
Tel : (852) 2543 0543 Fax: (852) 2815 0164
Email: exhibition@kets.hk Website: www.METS.hk





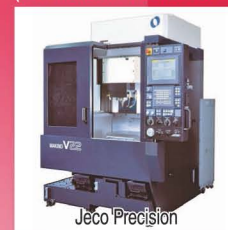
Machinery, Equipment, Technology and Supplies for Jewellery & Watch Industry

香港珠宝钟表工业科技及用品展

24-27 / 6 / 2015

Star Hall, Kowloonbay International Trade & Exhibition Centre, Hong Kong

(Exhibits of METS 2014)



Jeco Precision



Seve Studio



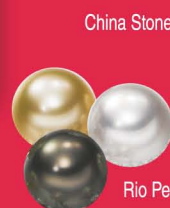
Kingsway



Biaoqi



Alpress



Rio Pearl



Lucky Gems



Opals Mine

China Stone

METS 2015 - The one-stop sourcing and technology exchange platform

METS (Machinery, Equipment, Technology and Supplies for Jewellery & Watch Industry) is an acclaimed machinery and supplies exhibition in Asia, aiming to provide jewellery and watch makers in the region with ultimate manufacturing solutions.

Exhibits cover the entire jewellery and watch production process encompassing a wide spectrum of advanced manufacturing equipment, tools, supplies, testing devices, security systems, etc. Highlights of the 2015 edition include a wide array of raw materials, including natural coloured gemstones, precious loose pearls and more.

Participation fee

Format of participation	Booth fee	Corner surcharge
Standard booth (min 9 sqm) Inclusive of partitions, carpet, fascia, 1 table, 4 chairs, 4 long-arm spotlights or fluorescent tubes, 1 power socket (1kW) and 1 waste basket	US\$360/ sqm	2-side open : US\$500 3-side open : US\$1,000
Raw space (min 24 sqm) Special design requests must be reviewed and approved by the Organizer	US\$330/ sqm	2-side open : US\$500 3-side open : US\$1,000 4-side open : US\$1,500

Organizer:



香港珠寶玉石廠商會

Hong Kong Jewellery & Jade Manufacturers Association

Hong Kong Jewellery & Jade Manufacturers Association (HKJJA) is a major trade association in the jewellery and jade manufacturing sector in Hong Kong. Launched the first local jewellery exhibition in 1968, HKJJA has organized 'Hong Kong Pavilion' at the world's top jewellery fairs for over 40 years. A veteran jewellery show operator, HKJJA has an extensive knowledge about the needs of the jewellery and watch making sector in Asia, as well as a close connection with jewellery and watch fraternities in Europe, America and Asia. With the back-up of members and an exhaustive database of international jewellery and watch practitioners, HKJJA has already secured a vast number of quality buyers for METS.

Contact us: Flat A, 12/F., Kaiser Estate Phase 1, 41 Man Yue Street, Hunghom, Kowloon, Hong Kong
Tel: (852) 2543 0543 Fax: (852) 2815 0164 Email: exhibition@nets.hk Website: www.METS.hk



Reply slip

Fax: (852) 2815 0164

Company name: _____

Company address: _____

Tel: _____ Fax: _____ Email*: _____

Contact person: _____

☐ We are interested in exhibiting in METS 2015. Please provide more details for participation.

☐ We are interested in visiting METS 2015. Please keep us posted and send us a buyer's registration form.

*Mandatory Fields